

DV15 Directional Valves

DV15 High Flow Pilot-Controlled Directional Cartridges

Comatrol raises the standard for cartridge valves with the DV15 line of pilot-controlled directional cartridges. These are 15-size, 2-position, 4-way valves designed for delivering high flow in a small package. Choose from four popular schematics, including one specifically designed for reversing fan drive HIC applications.

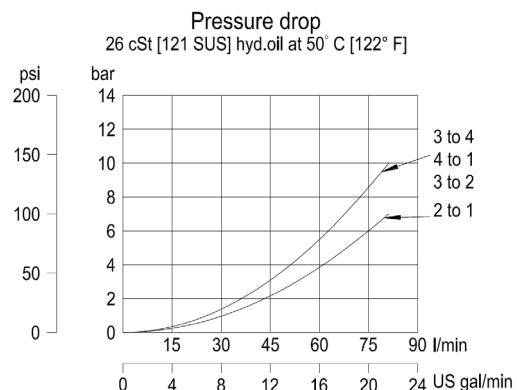
As a result of the optimal design of the DV15 generated from computational fluid dynamics, these valves can replace several CETOP D03 and D05 valves. Not only do they have a significantly smaller space claim, they are also exceptionally light-weight. When integrated into a reversing fan drive HIC, they offer an exceptionally low cost, high performance solution.

As Comatrol, a member of the Sauer-Danfoss Group, we engineer, manufacture and supply screw-in Cartridge Valves and Hydraulic Integrated Circuits (HIC) to market-leading quality levels. We work closely with our customers around the world to deliver optimal machine control solutions based on their specific needs.



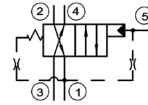
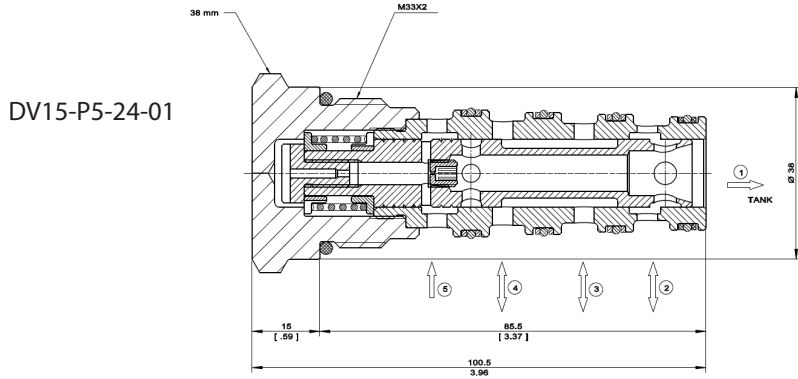
Features

- High flow capability
 - 70 LPM [18.4 GPM] at 7 bar pressure drop for applications requiring higher flow and controlling motors and cylinders
 - Can be applied up to 80 LPM (21.1 GPM)
- Rated at 230 bar [3335 psi] based on NFPA fatigue test standards (at 1 million cycles)
- Pilot-controlled, 2-position, 4-way valves
 - Only requires 2 bar (29 psi) of shift pressure on port 5
 - Can be piloted with many 2-way valves, including solenoid, sequence, relief or manual valves, when using the internal pilot drain orifice option
 - Can be piloted with a 2-position, 3-way solenoid valve when using the internal pilot drain plug option
- Circuit design flexibility
 - 4 popular schematics available including 1 schematic specifically designed for fan drive HIC's (DV15-P5-24-FD)
 - 3 schematics with open transition spools for smooth shifting and minimal pressure spikes
- Effective alternative to several 2-position, 4-way CETOP D03 and D05 valves
 - More efficient, compact manifold designs, even when including the pilot solenoid valve
 - Lower pressure drop thru passageways (ISO mount of D03/D05 is restrictive)
 - Much lower pressure drop than D03, from 24 bar to 5 bar savings (from P-A-B-T) at 40 LPM
 - Comparable pressure drop to D05 when applying up to 80 LPM (from P-A-B-T)
 - Compact size, only 101 mm long [3.96 in.] and light weight 0.8 kg (1.75 lbs)
- For pre-engineered HICs using the DV15, refer to Comatrol's RFDE-40 and RFDE-80 reversing fan drive HIC product line
- 15 Size Cavity, 5-Ported: NCS 12/5

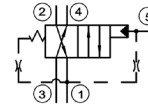
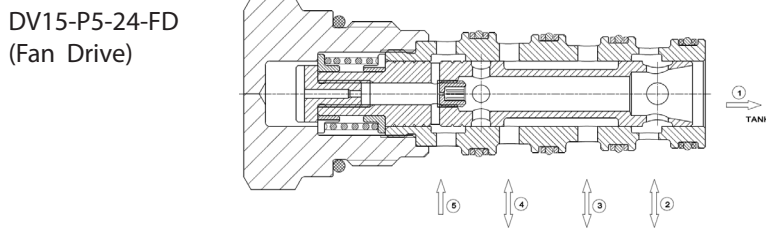
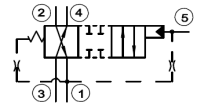


Local Address:

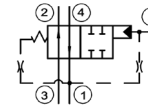
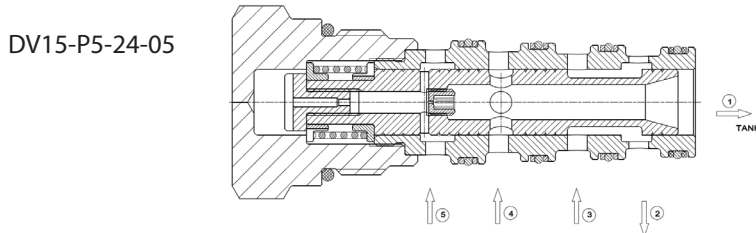
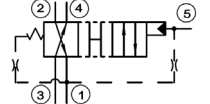
Dimensions and Schematics



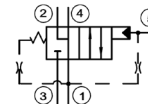
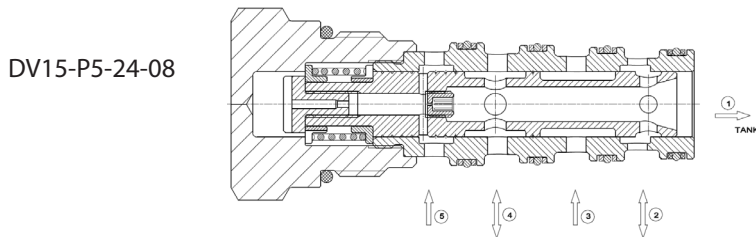
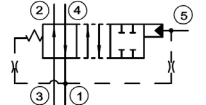
Schematic with transition



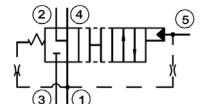
Schematic with transition



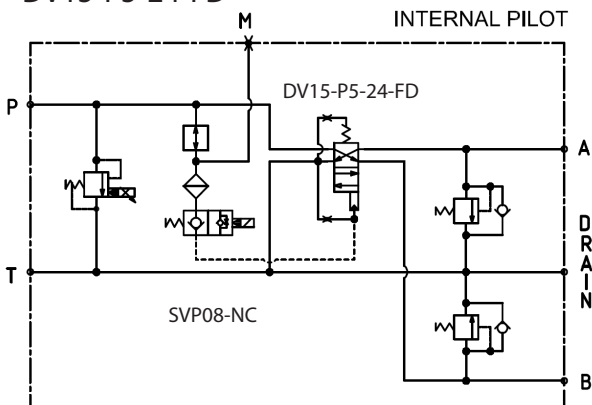
Schematic with transition



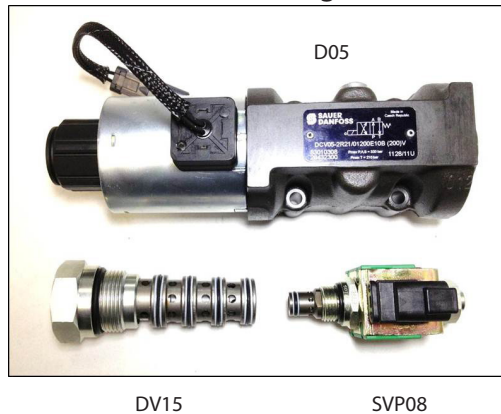
Schematic with transition



Example Reversing Fan Drive Circuit with DV15-P5-24-FD



79% Less Weight



3.8 kg
 (8.5 lbs)

Difference:
 3.0 kg
 (6.75 lbs)

0.8 kg
 (1.75 lbs)